

PLANCHES



Fig. 1. — *Protopterus aethiopicus* HECKEL,
♂ 88 cm., 3 kg. 825, st. 304.

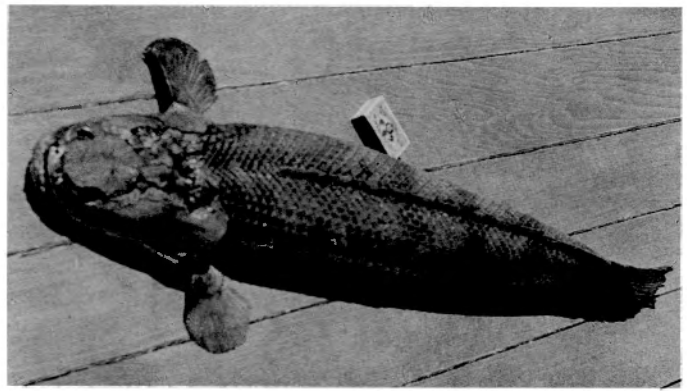


Fig. 2. — *Polypterus congicus* BOULENGER,
♀ 84 cm., 3 kg. 530, st. Albertville 1-II-47.

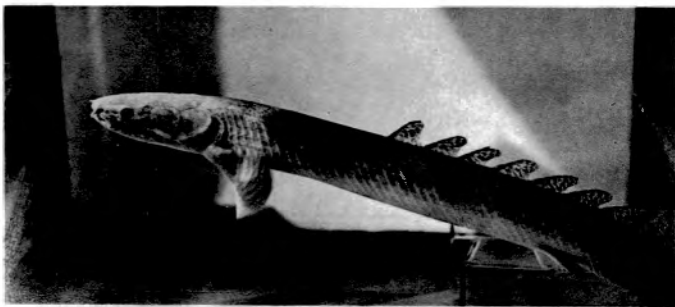


Fig. 3. — *Polypterus ornatipinnis* BOULENGER,
♀ 46 cm., 450 gr., st. 146.



Fig. 4. — *Mormyrus longirostris* PETERS,
♀ 66 cm., 1 kg. 700, st. 143.

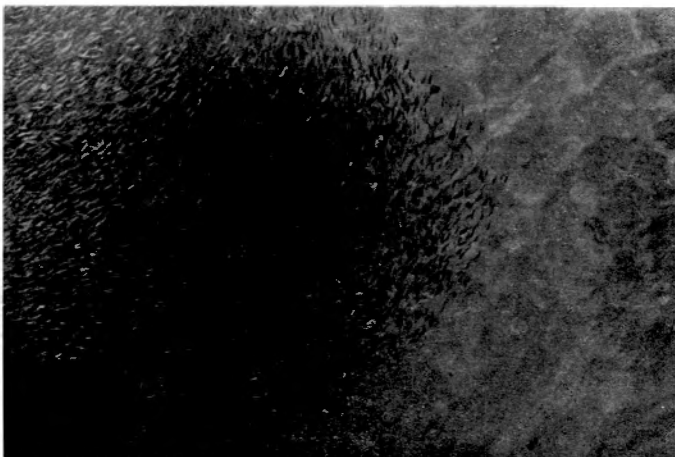


Fig. 5. — Banc de *Stolothrissa tanganicae* REGAN,
photographié du bateau dans la baie de M'Toto, 7-III-47.
(Photo A. CAPART).



Fig. 6. — Séchage des *Stolothrissa* sur la plage de Kigoma,
24-I-47.

M. POLL. — Poissons non Cichlidae du lac Tanganika.

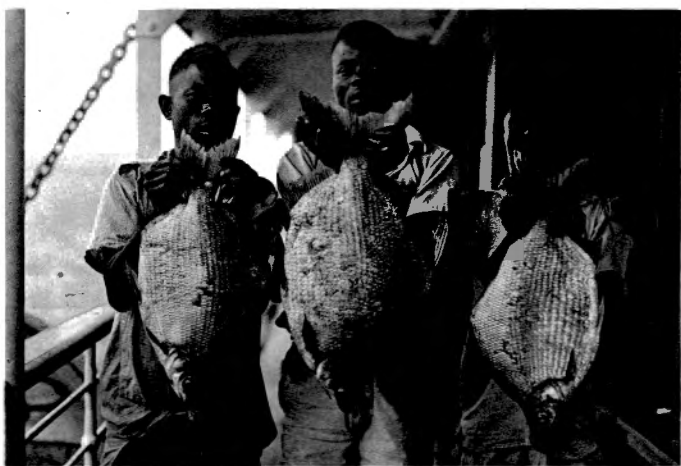


Fig. 1. — *Citharinus gibbosus* BOULENGER, la plus grande ♀ mesure 61 cm., 4 kg. 400, st. 126.

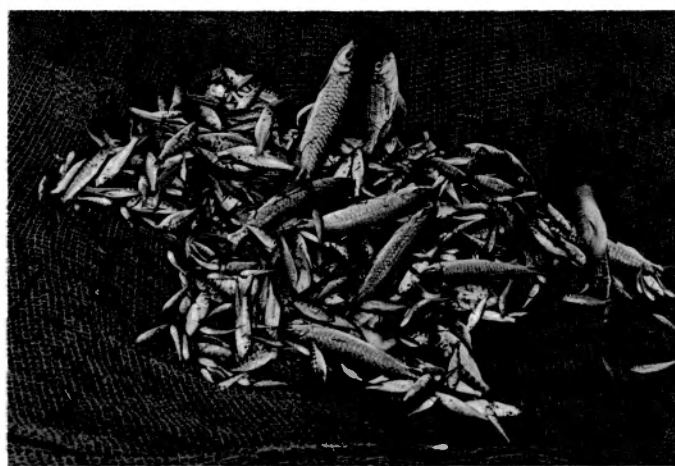


Fig. 2. — Résultat d'un coup de senne, ayant capturé de nombreux *Alestes rhodopleura* BOULENGER, st. 193 bis.

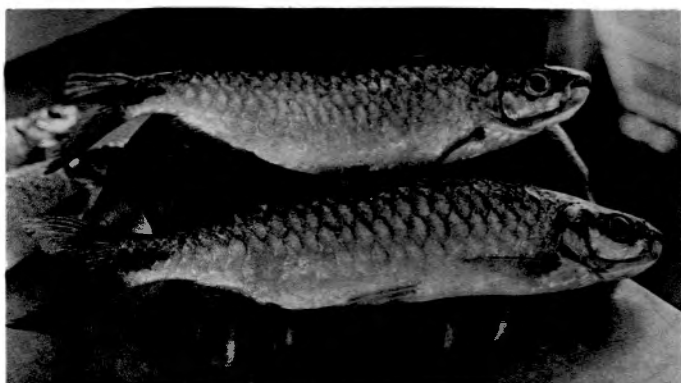


Fig. 3. — *Alestes rhodopleura* BOULENGER, 34,5 cm., 415 grs et 34 cm., 420 grs, st. 193.



Fig. 4. — *Alestes macrophthalmus* GÜNTHER, 49,6 cm., 1 kg. 500, st. Albertville 24-X-46.

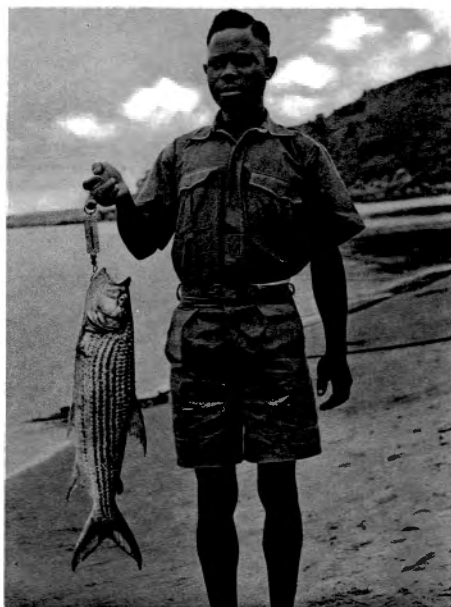


Fig. 5. — *Hydrocyon lineatus* BLEEKER, 69 cm., 2 kg. 825, st. 150.

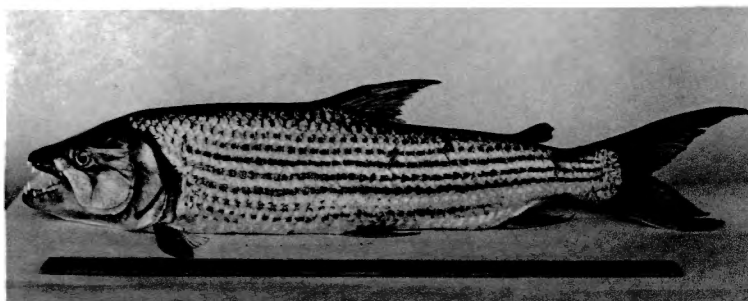
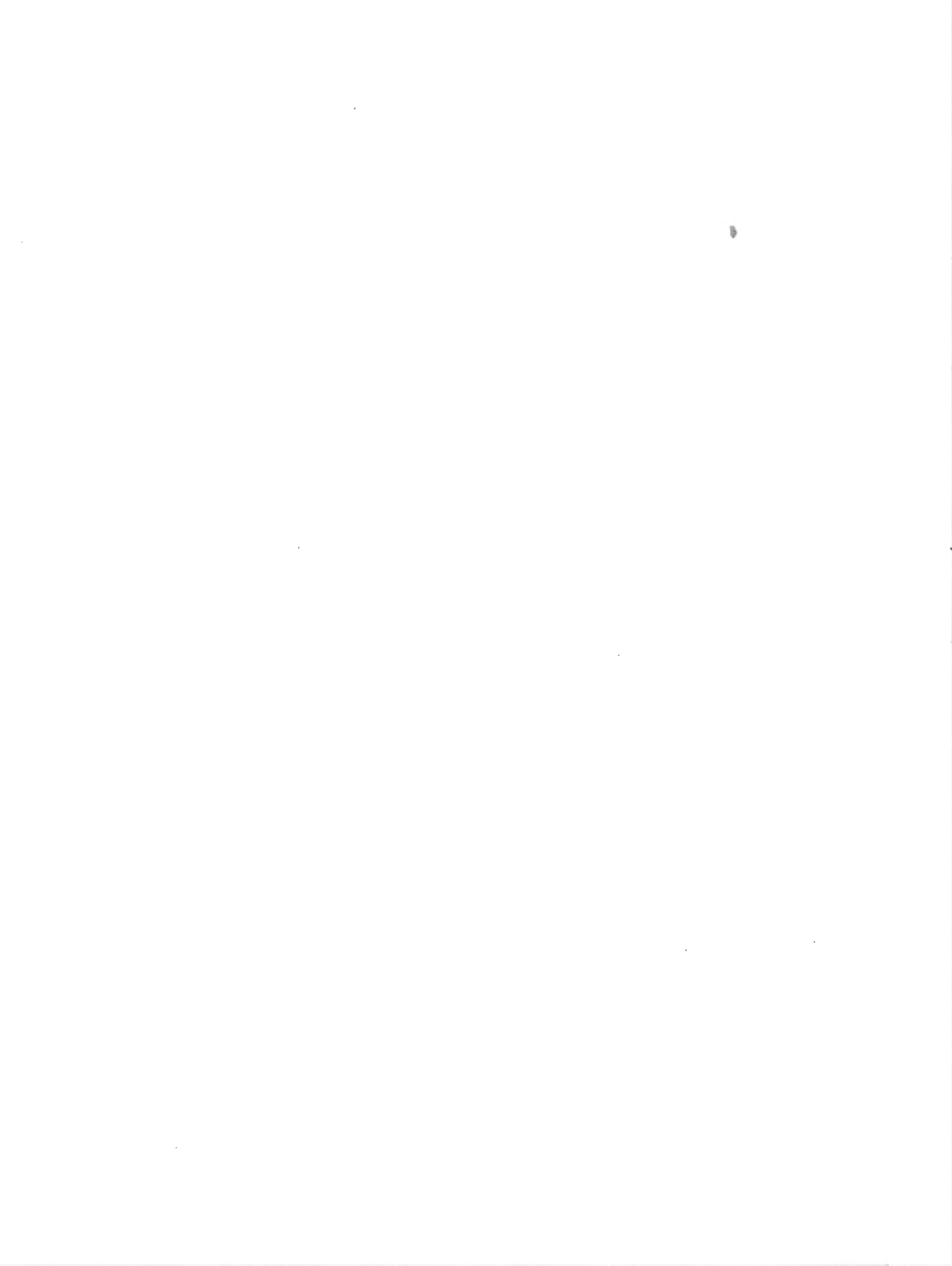
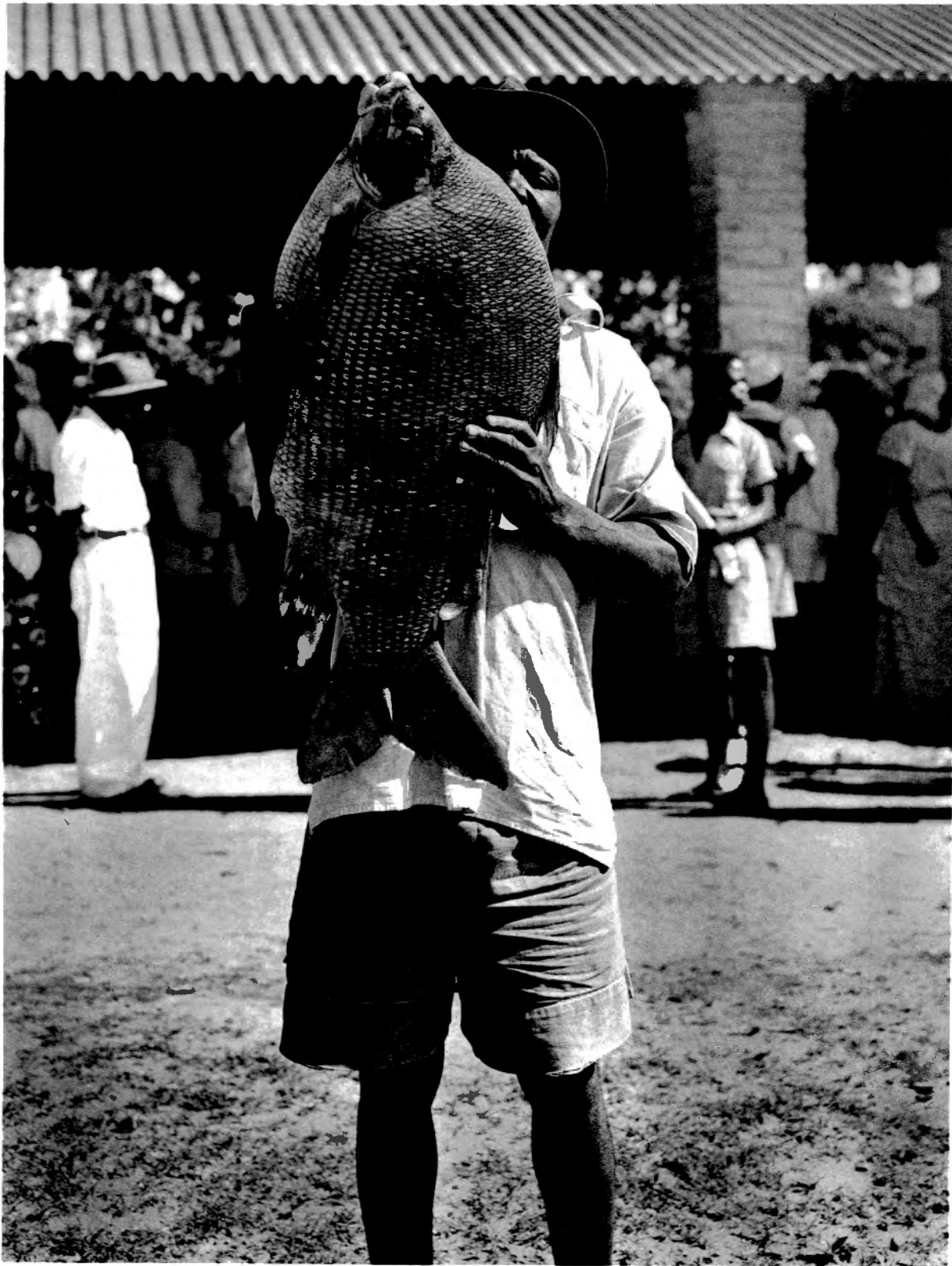


Fig. 6. — *Hydrocyon lineatus* BLEEKER, 63,5 cm., 2 kg. 200, st. 112.

M. POLL. — Poissons non Cichlidae du lac Tanganika.





Distichodus sexfasciatus BOULENGER,
♀ 76 cm., 11 kg. 100, st. Albertville, 17-I-1947.

M. POLL. — Poissons non Cichlidae du lac Tanganika.





Fig. 1. — *Barbus tropidolepis* BOULENGER, 5 kg.
Chrysichthys brachynema BOULENGER, 9 kg.,
st. Albertville, 25-XI-46.



Fig. 2. — *Barbus tropidolepis* BOULENGER, tête.
poids estimé 10 kg.,
st. Pier d'Albertville, 23-IV-47.



Fig. 3. — *Barbus lestradei* DAVID,
♀ 80 cm., 8 kg. 500, st. Albertville 20-II-46.



Fig. 4. — *Barbus serrifer* BOULENGER,
environ 10 cm., st. 174.



Fig. 5. — *Engraulicypris minutus* BOULENGER
environ 10 cm., st. 161.

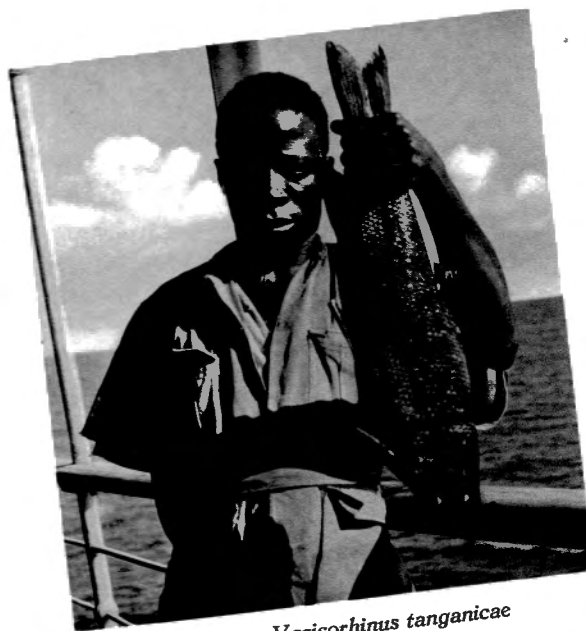


Fig. 6. — *Varicorhinus tanganicae*
BOULENGER,
♂ 57,5 cm., 2 kg. 450, st. 107.

M. POLL. — Poissons non Cichlidae du lac Tanganika.

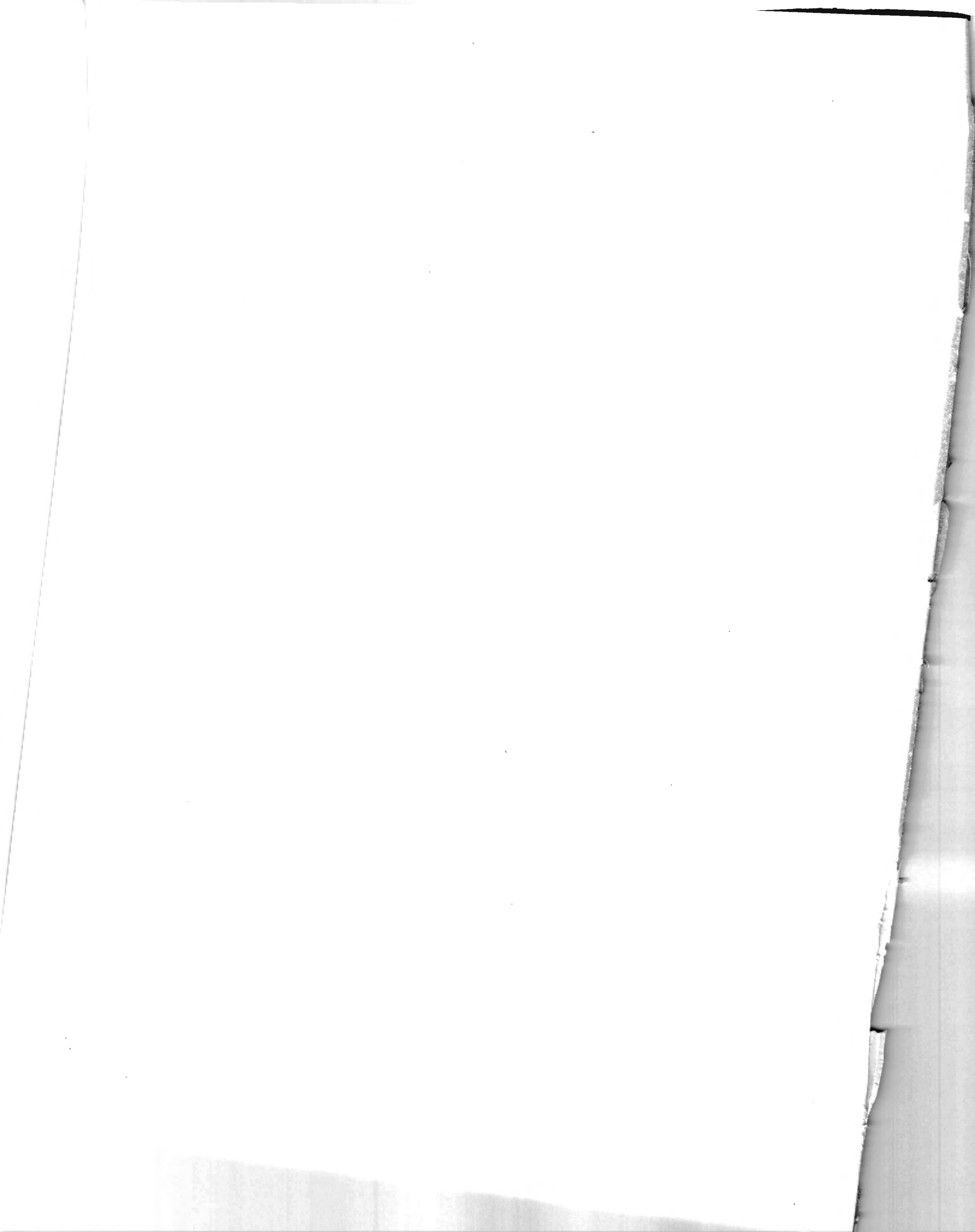




Fig. 1. — *Heterobranchus longifilis*
CUVIER et VALENCIENNES, 1 m. 10, 30 kg., st. 28.

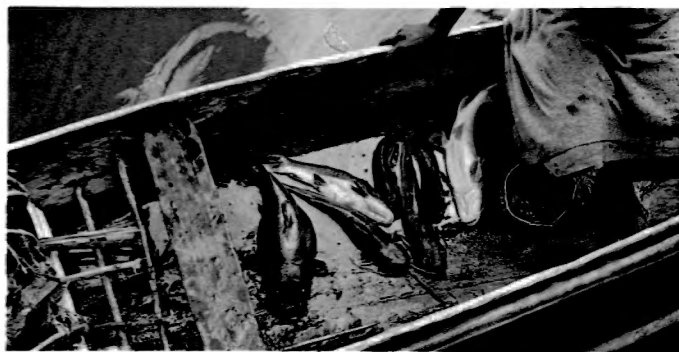


Fig. 2. — *Chrysichthys grandis* BOULENGER,
Chrysichthys stappersii BOULENGER,
Chrysichthys brachynema BOULENGER, st. 196.



Fig. 3. — *Chrysichthys brachynema* BOULENGER,
série d'exemplaires capturés au chalut à panneaux, st. 88.



Fig. 4. — *Chrysichthys grandis* BOULENGER,
11 et 11 kg. 500, st. Albertville, 24-IV-47.



Fig. 5. — *Clarias mossambicus* PETERS,
45,3 cm., 525 grs et 46 cm., 530 grs, st. 9.



Fig. 6. — *Dinotopterus cunningtoni*
BOULENGER,
70 cm., 3 kg. 175, st. 221.

M. POLL. — Poissons non Cichlidae du lac Tanganika.





Fig. 1. — *Auchenoglanis occidentalis*
CUIVIER et VALENCIENNES
54 cm., 1 kg. 650 et 60 cm., 2 kg. 630, st. 147.



Fig. 2. — *Auchenoglanis occidentalis*
CUIVIER et VALENCIENNES
Chrysichthys brachynema
BOULENGER,
Village Lubunduie, I-XI-46.

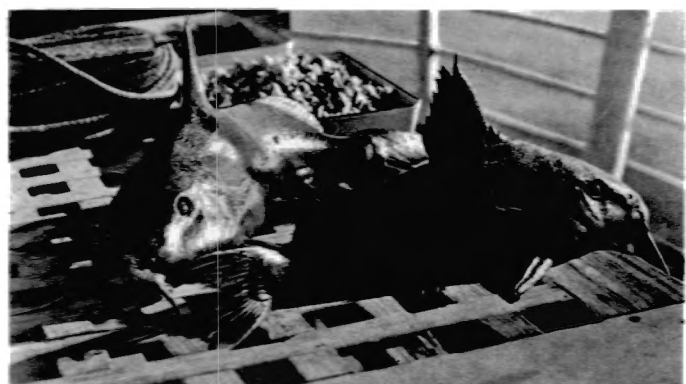


Fig. 3. — *Synodontis lacustricolus* POLL,
43 cm., 1 kg., 51 cm., 1 kg. 825, st. 63.



Fig. 4. — *Synodontis multipunctatus* BOULENGER,
série d'exemplaires pêchés au chalut à panneaux, st. 312.



Fig. 5. — *Amphilius platychir* GÜNTHER,
de la rivière Kanuënué, st. 177.

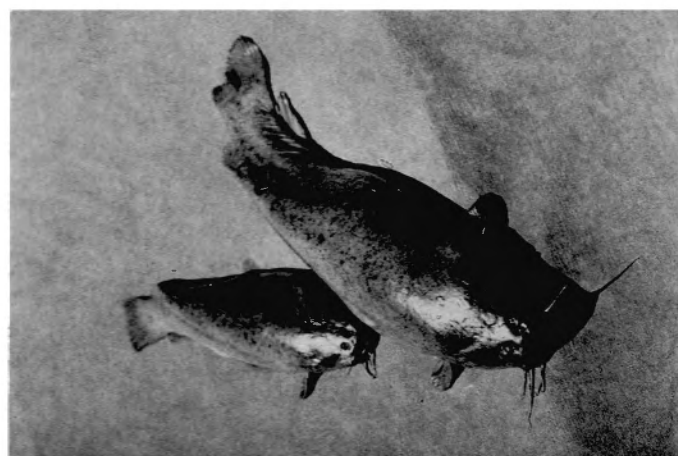


Fig. 6. — *Malapterurus electricus* GMELIN, st. 129.

M. POLL. — Poissons non Cichlidae du lac Tanganika.





Fig. 1. — Poissons du lac en aquarium :
Aplocheilichthys pumilus (BOULENGER),
et *Haplochromis burtoni* (GÜNTHER), st. Albertville XI-46.

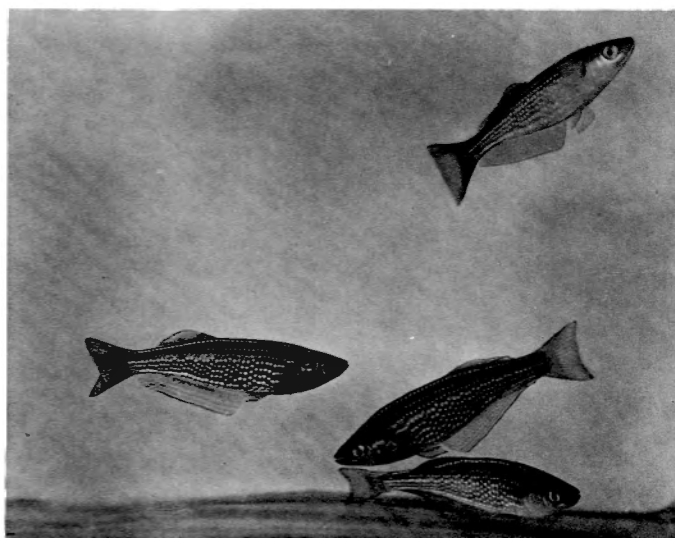


Fig. 2. — *Lamprichthys tanganicanus* (BOULENGER),
provenant de la baie de Tembwe,
mâles photographiés en aquarium, st. 68.



Fig. 3. — *Luciolates stappersii* BOULENGER,
et pêcheur avec cannes à pêche spéciales, st. 182.



Fig. 4. — Guirlande de *Luciolates*
séchés et fumés, st. 182.



Fig. 5. — *Lates microlepis* BOULENGER,
pris au makila, st. 125.



Fig. 6. — *Lates microlepis* BOULENGER,
83 cm., 3 kg. 950, st. 225.

M. POLL. — Poissons non Cichlidae du lac Tanganika.



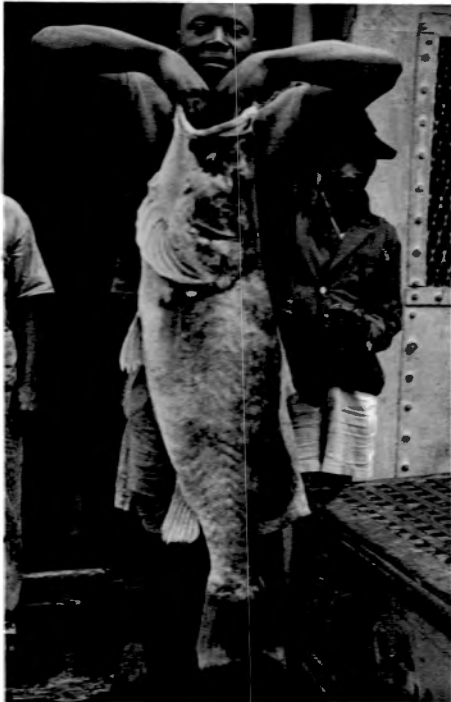


Fig. 1. — *Lates angustifrons* BOULENGER,
1 m. 03, 14 kg., st. 267.



Fig. 3. — Tête de grand
Lates angustifrons BOULENGER,
Uvira, IV-1952. (Photo N. LELEUP).

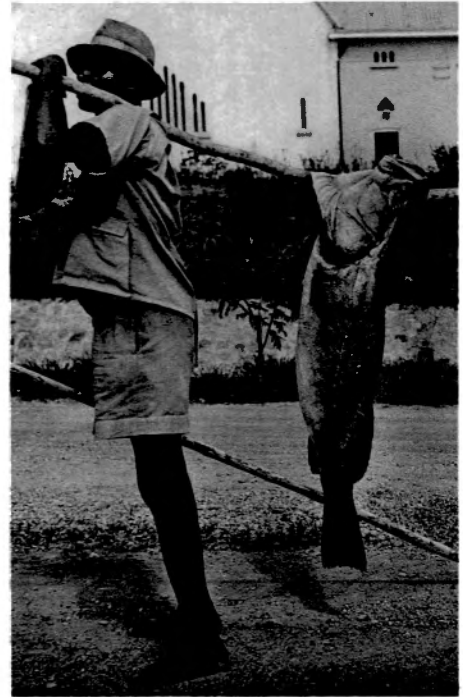


Fig. 2. — *Lates angustifrons* BOULENGER,
1 m. 20, 22 kg., st. Albertville, 16-XI-46.



Fig. 4. — *Lates angustifrons* BOULENGER,
1 m. 32, 29 kg., st. Albertville, 4-II-47.

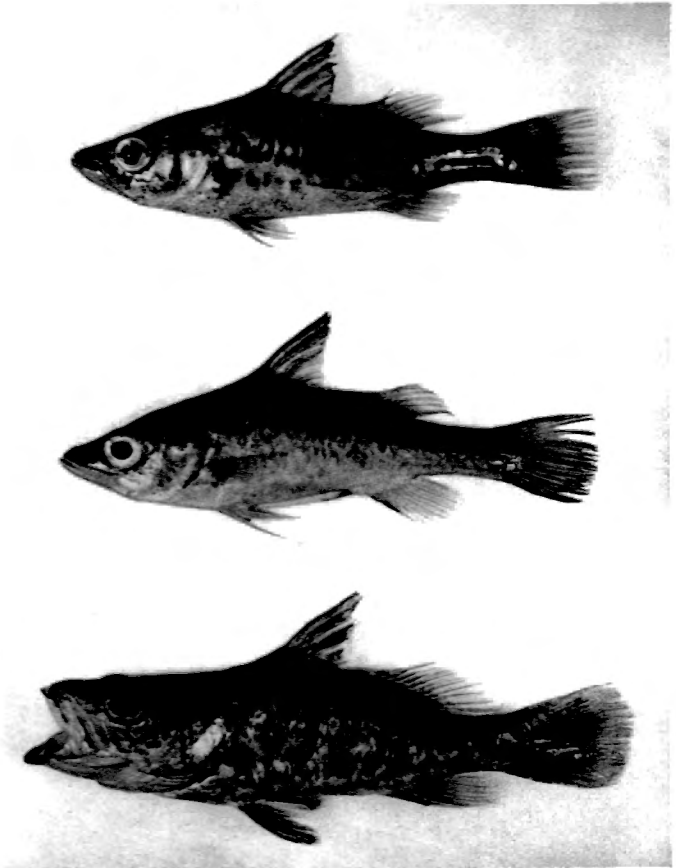
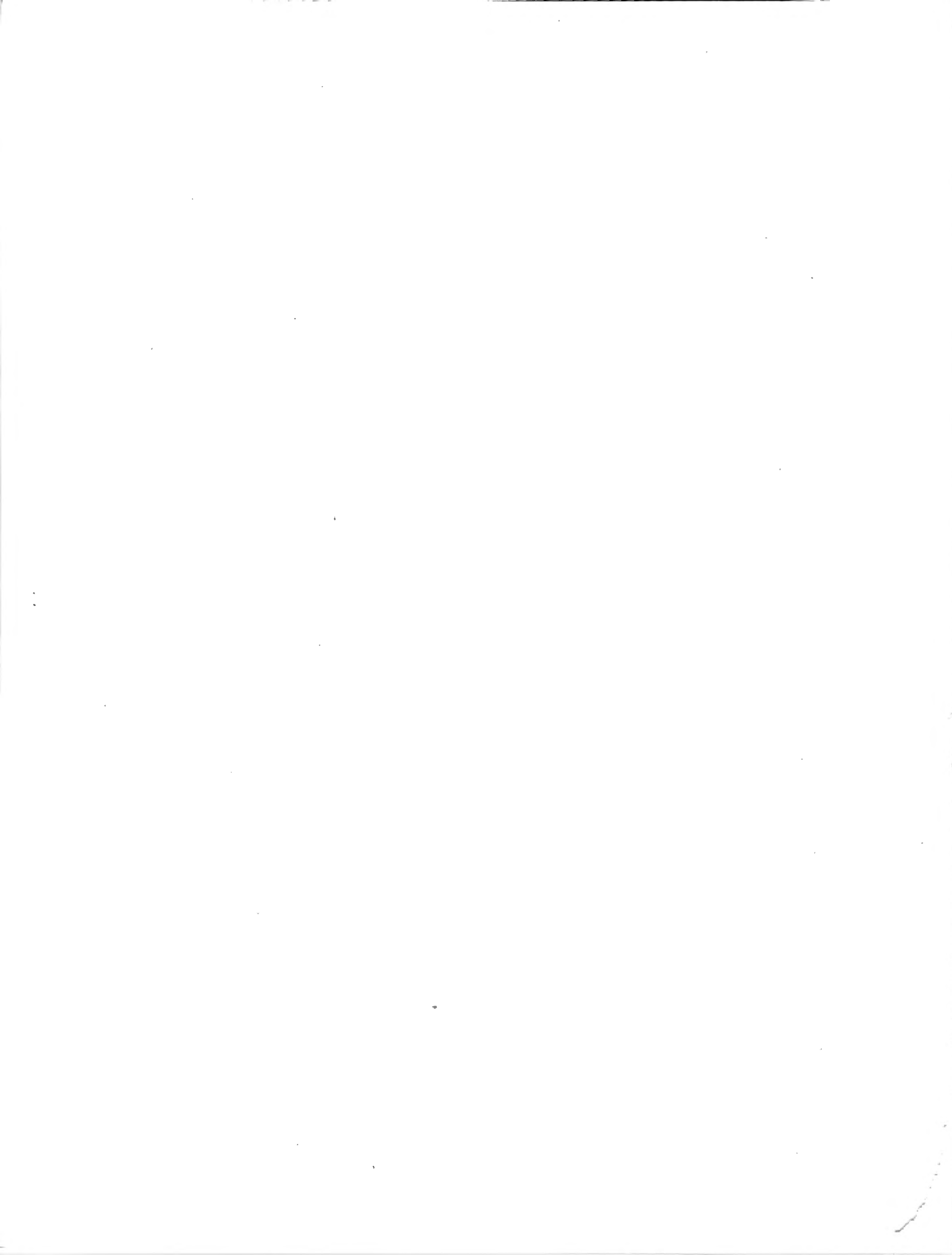
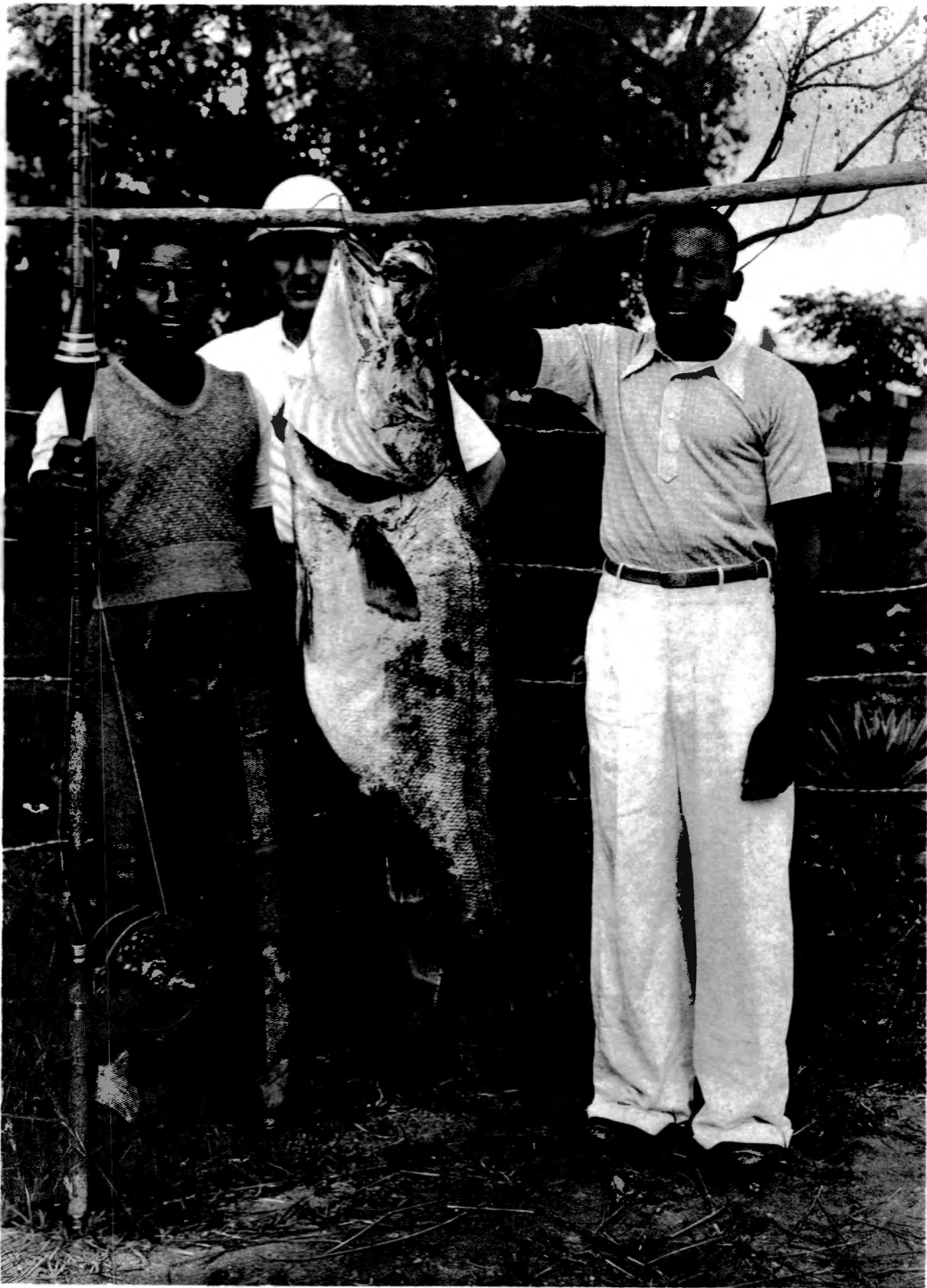


Fig. 5. — A *Lates microlepis* BOULENGER,
B *Lates mariae* STEINDACHNER,
C *Lates angustifrons* BOULENGER.
Jeunes à livrée caractéristique. (x 1/2).

M. POLL. — Poissons non Cichlidae du lac Tanganika.





Lates angustifrons BOULENGER, 1 m. 44, 34 kg., pêché à la ligne au pier d'Albertville en novembre 1938,
par M. Perpette. (Photo M. PERPETTE).

M. POLL. — Poissons non Cichlidae du lac Tanganika.





Fig. 1. — *Lates mariae* STEINDACHNER
et *Cyphotilapia frontosa* (BOULENGER),
62 cm., 2 kg. 200, 28 cm., 350 grs, st. 48.



Fig. 2. — *Lates angustifrons* BOULENGER, 59,6 cm., 2 kg.150,
Lates mariae STEINDACHNER, 64 cm., 2 kg. 281, st. 118.



Fig. 3. — *Lates mariae* STEINDACHNER,
st. 278.

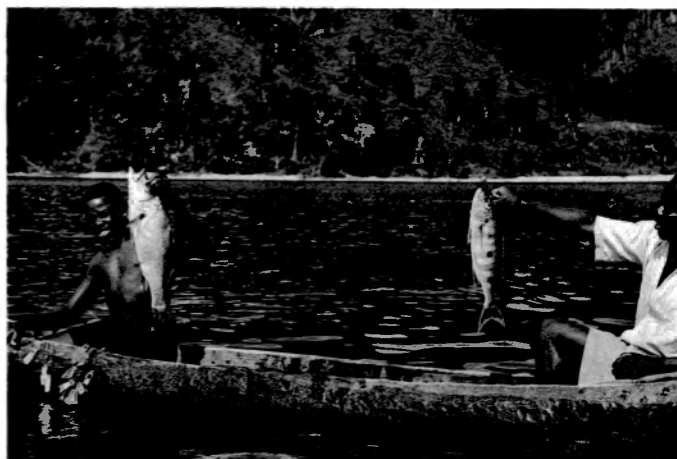


Fig. 4. — *Lates mariae* STEINDACHNER, 62 cm., 2 kg.200,
Boulengerochromis microlepis BOULENGER, st. 52.



Fig. 5. — *Lates mariae* STEINDACHNER,
série d'exemplaires pris au chalut à panneaux, st. 70.



Fig. 6. — *Lates mariae* STEINDACHNER,
série d'exemplaires pris au chalut à panneaux, st. 70.

M. POLL. — Poissons non Cichlidae du lac Tanganika.





Fig. 1. — *Mastacembelus cunningtoni*
BOULENGER,
58 cm., 515 grs; st. 101.



Fig. 2. — *Mastacembelus ophidium* GÜNTHER,
35,1 cm., st. 27.



Fig. 3. — *Tetrodon mbu* BOULENGER, pris à la senne,
st. 307.

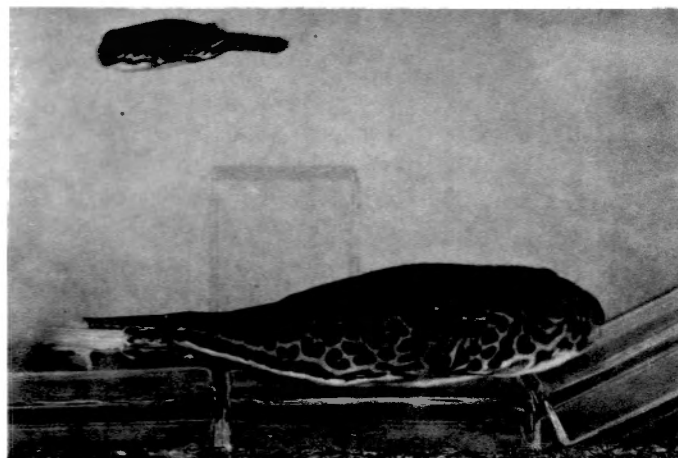


Fig. 4. — *Tetrodon mbu* BOULENGER, en aquarium,
st. 307.

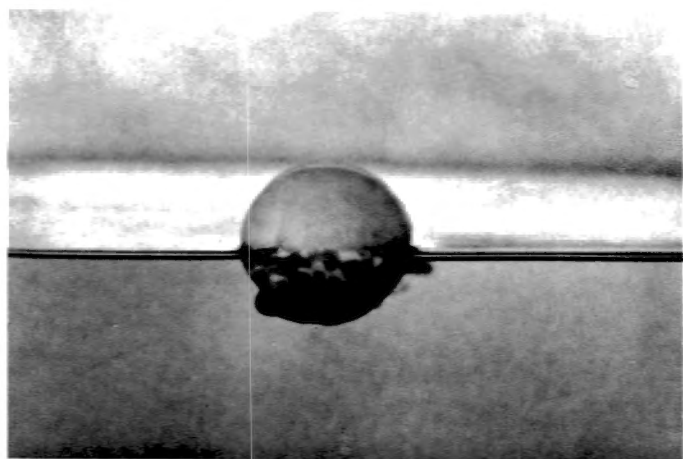


Fig. 5. — *Tetrodon mbu* BOULENGER,
gonflé à la surface de l'eau, st. 307.

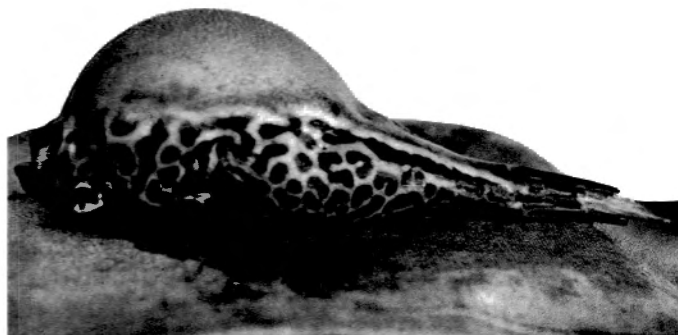


Fig. 6. — *Tetrodon mbu* BOULENGER,
gonflé hors de l'eau, st. 307.

M. POLL. — Poissons non Cichlidae du lac Tanganika.

